

To find out more and apply



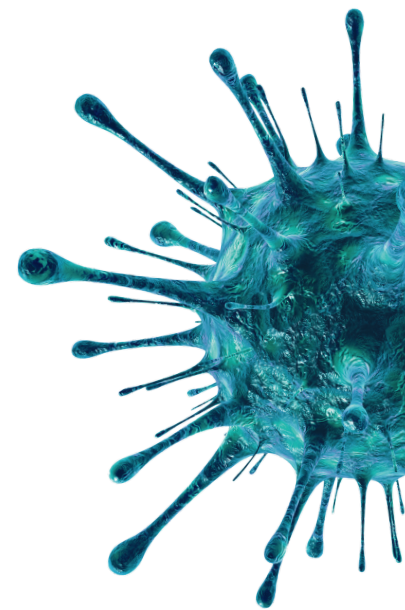
Applications are made via the RSB
mySociety portal

Questions?
Please contact the team on
registers@rsb.org.uk

Biorisk Professional
Registration Scheme

Biorisk Professional Registration Scheme

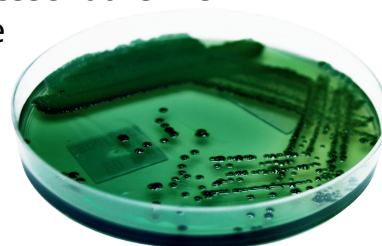
A programme from the
Royal Society of Biology for
biorisk practitioners to
develop and evidence their
professional skills



BSLG **Biorisk** Professional
Registration Scheme

Overview of the scheme

- A programme from RSB for biorisk practitioners to develop and evidence their professional skills
- Provides an objective benchmark of competence and ensures consistency and quality of biorisk management advice and support
- Elevates the professional status of practitioners
- Developed by The Biorisk Strategic Leadership Group (BSLG) and RSB. BSLG is a group of leaders from a range of bio-sector organisations that develops strategic initiatives in biorisk
- Covers professionals working in biosafety, biosecurity, biorisk, laboratory managers and similar roles across whole bioeconomy sector (high containment facilities, research institutes, universities, healthcare, industry) and caters for all containment levels
- Two pathways: **Registered Biorisk Adviser (RBA)** and **Registered Biorisk Specialist (RBS)**
- Both RBA and RBS comprise key technical knowledge from RSB approved training courses and essential skills evidenced via a portfolio of evidence



Both are built around 12 elements of biorisk management:

- | | |
|------------------------|---------------------------|
| • Management systems | • Hazard identification |
| • Risk assessment | • Containment & control |
| • Genetic modification | • Waste management |
| • Transport | • Competence & training |
| • Incident management | • Monitoring |
| • Engagement & impact | • Ethics & sustainability |

Key benefits of the scheme

- Provides registrants with recognised professional status and a career pathway
- As a professional body with Royal Charter, RSB lends credibility to the scheme
- As leading organisations in the sector, BSLG sponsor and support the scheme
- RSB's established CPD framework underpins the scheme, so registrants continue to develop and demonstrate competence
- Provides duty holders with a robust and reliable benchmark of competence when recruiting or developing practitioners, verified through a searchable online register
- Develops and demonstrates both key technical knowledge and essential skills, including 'soft skills' – focus is on 'what you know' rather than 'what you can do' – producing rounded, capable and employable professionals